

Visit our website:
www.sl-rack.com

Find us on



Innovative Product Development



„Our racking systems have been developed since 1996 and are continuously optimized. Pre-assembled components that are quick and easy to install, prompt order processing, a reliable product supply and cost-effectiveness are our focus.

All our components follow a convenient top-down installation approach, ensuring a smooth and timesaving workflow. SL Rack systems are installer-friendly, intuitive and standardized, while still having the flexibility to adapt to each respective project site.“

Sincerely,

Ludwig Schletter

SL Rack in numbers:

26..... Years of experience

30..... GW installed worldwide

15..... Product specialists are happy to support you

EU..... Almost exclusively manufactured in Germany and Europe

100% Stainless steel and aluminum - **extremly durable**

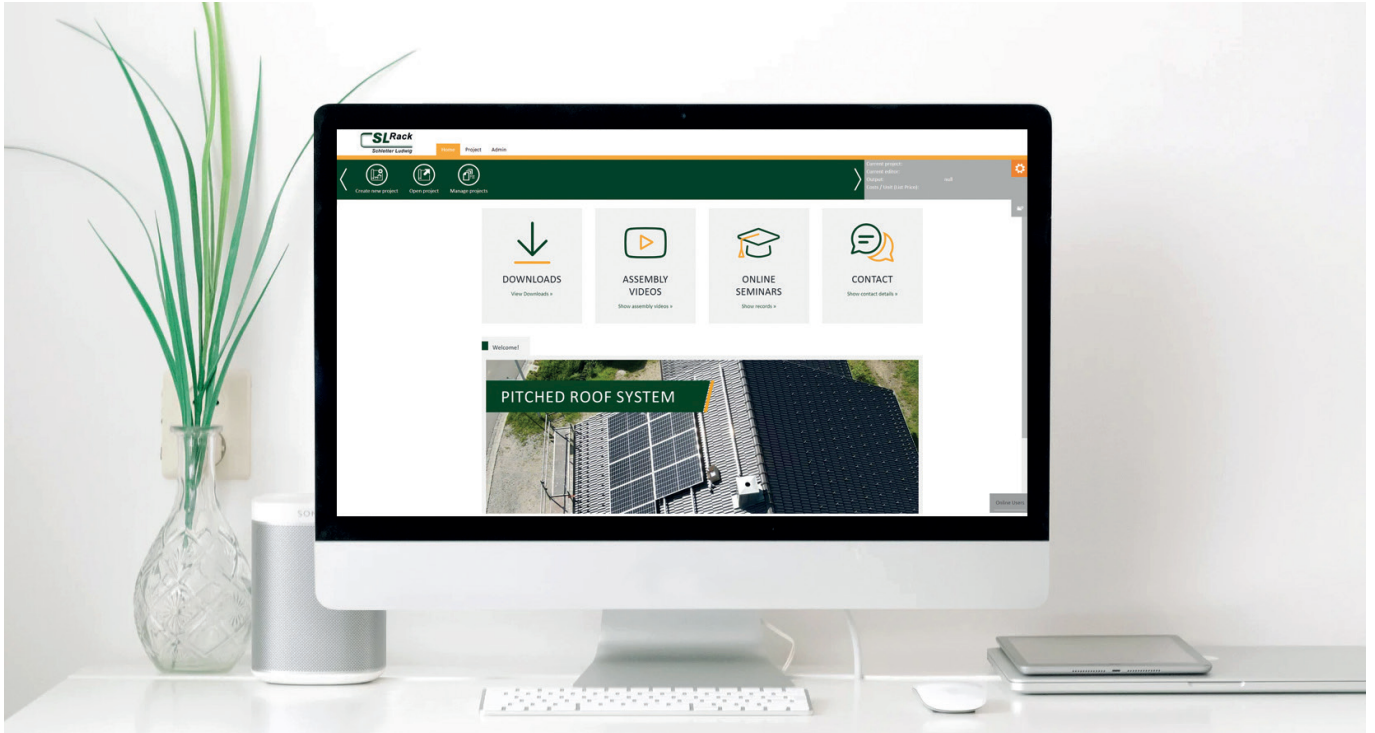


Visit our
website:
www.sl-rack.com



Check out our
YouTube-channel:
[Installation videos >](#)

*Our warranty conditions apply. They are available at www.sl-rack.com



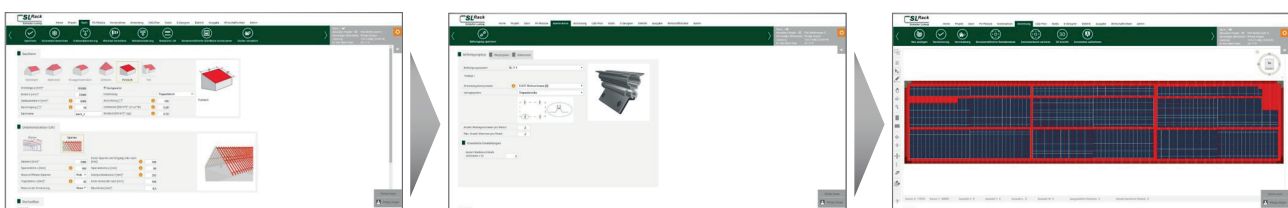
Welcome to our **Solar.Pro.Tool**

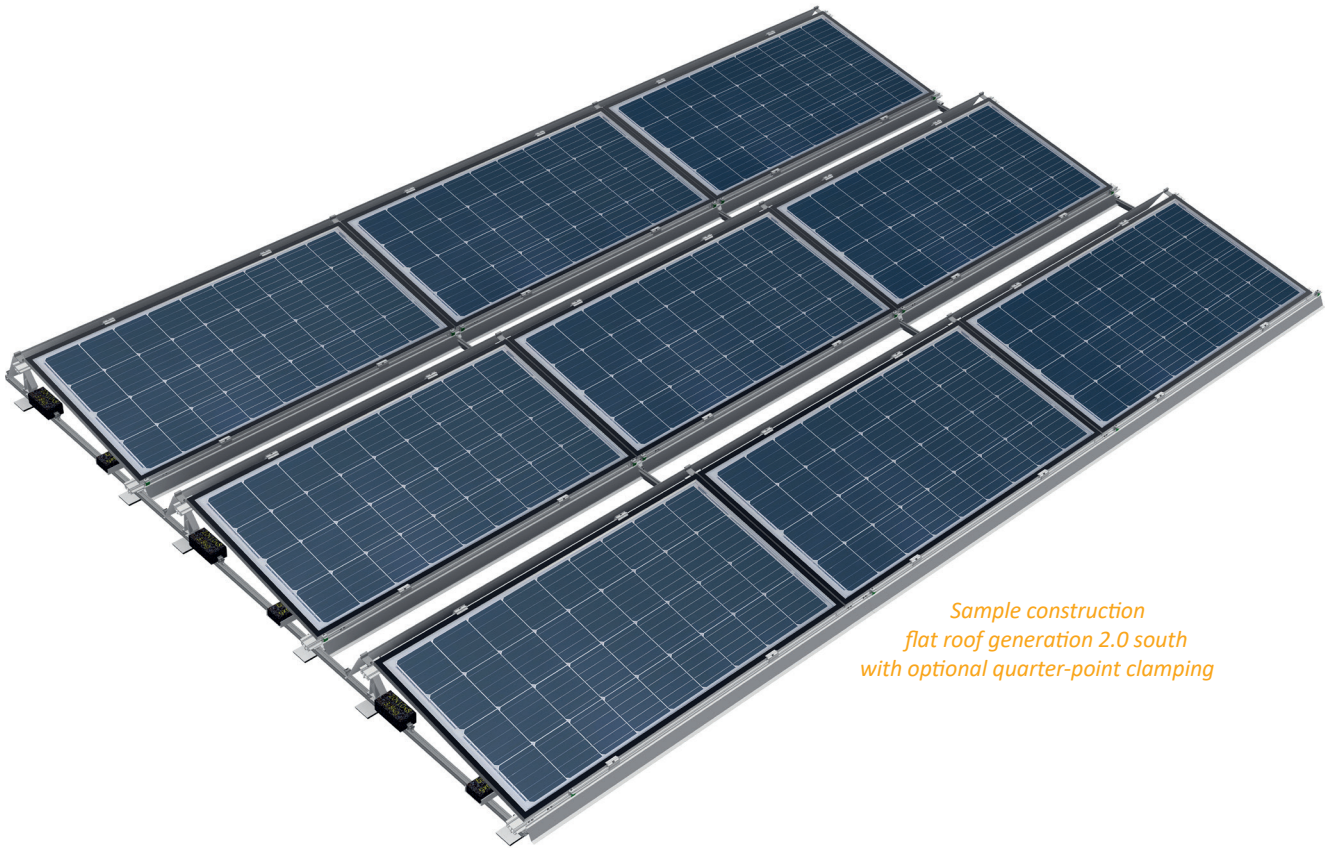
Solar.Pro.Tool



Design your rooftop projects quickly and with ease using our **Solar.Pro.Tool**, available on our website.

- » For all pitched and flat roofs
- » Finish your design in 10 simple steps
- » In 2D or 3D (PDF, DXF, DWG)
- » Building authority certified
- » Precise ballast calculations for any type of flat roof
- » Drawings and bill of material





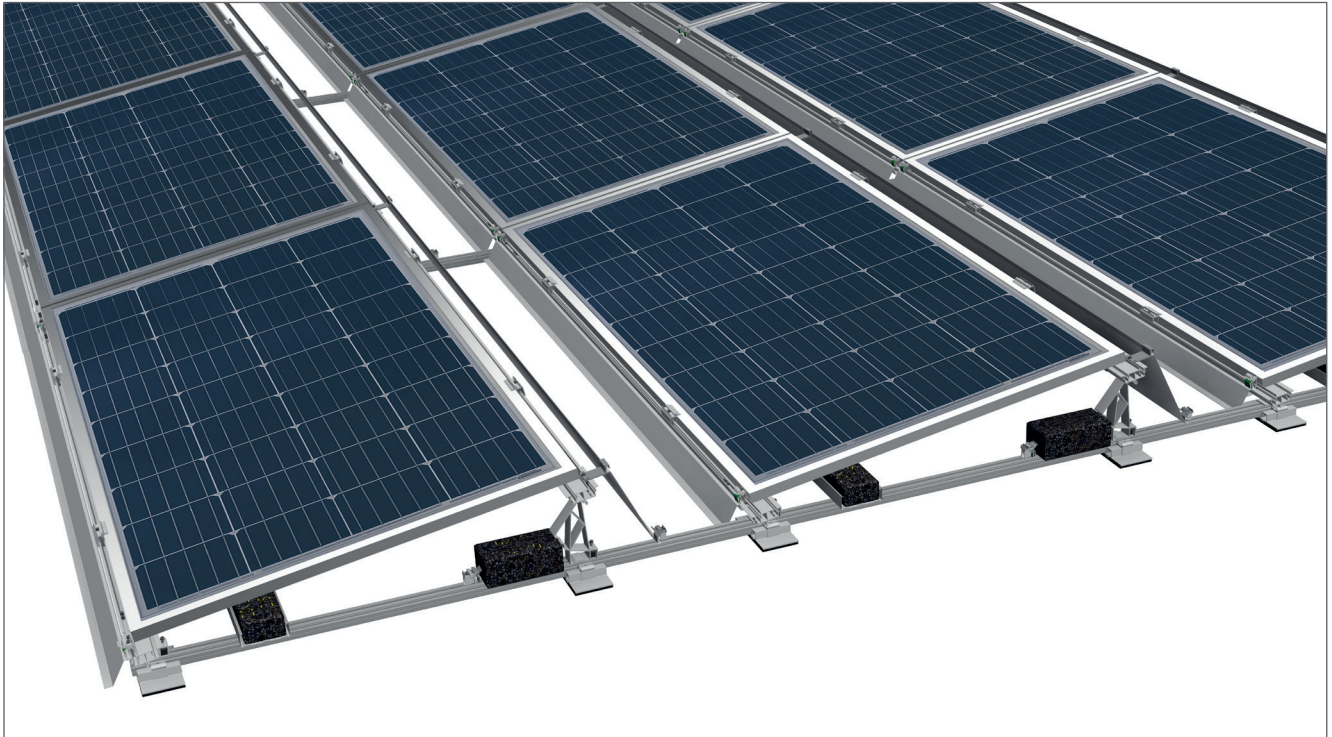
*Sample construction
flat roof generation 2.0 south
with optional quarter-point clamping*

The only system that can clamp any module size: Take advantage of the benefits of our flat roof system generation 2.0 south

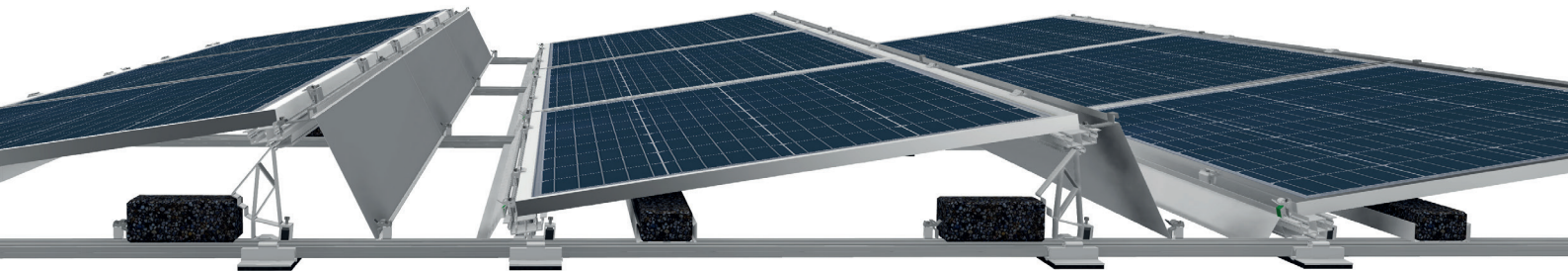
The flat roof system generation 2.0 impresses with additional benefits, and lets you complete your projects as efficiently and timely as possible.

The optional material-optimized quarter-point clamping adds significant value by simplifying the assembly process, while complying with the module manufacturer's installation instructions.

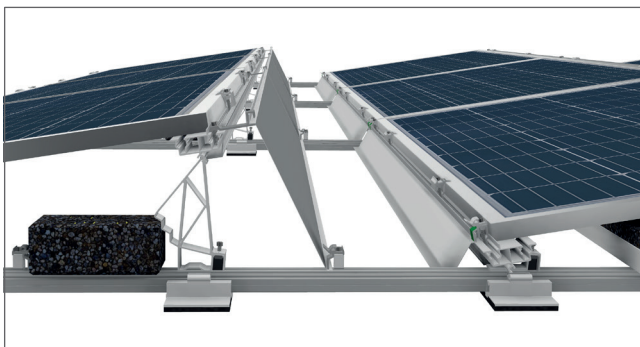
The components of our new generation will impress you with their well-thought-out simplifications, making the installation easier and quicker.



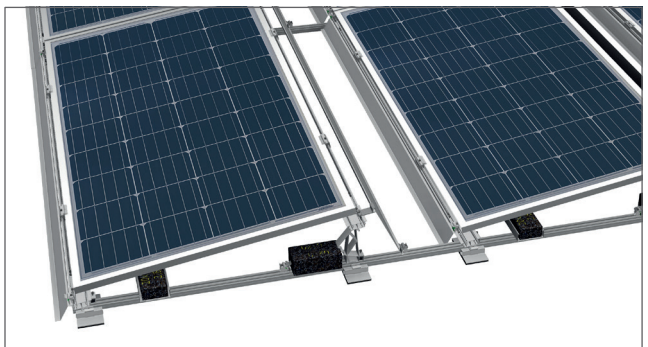
Structure alignment: south



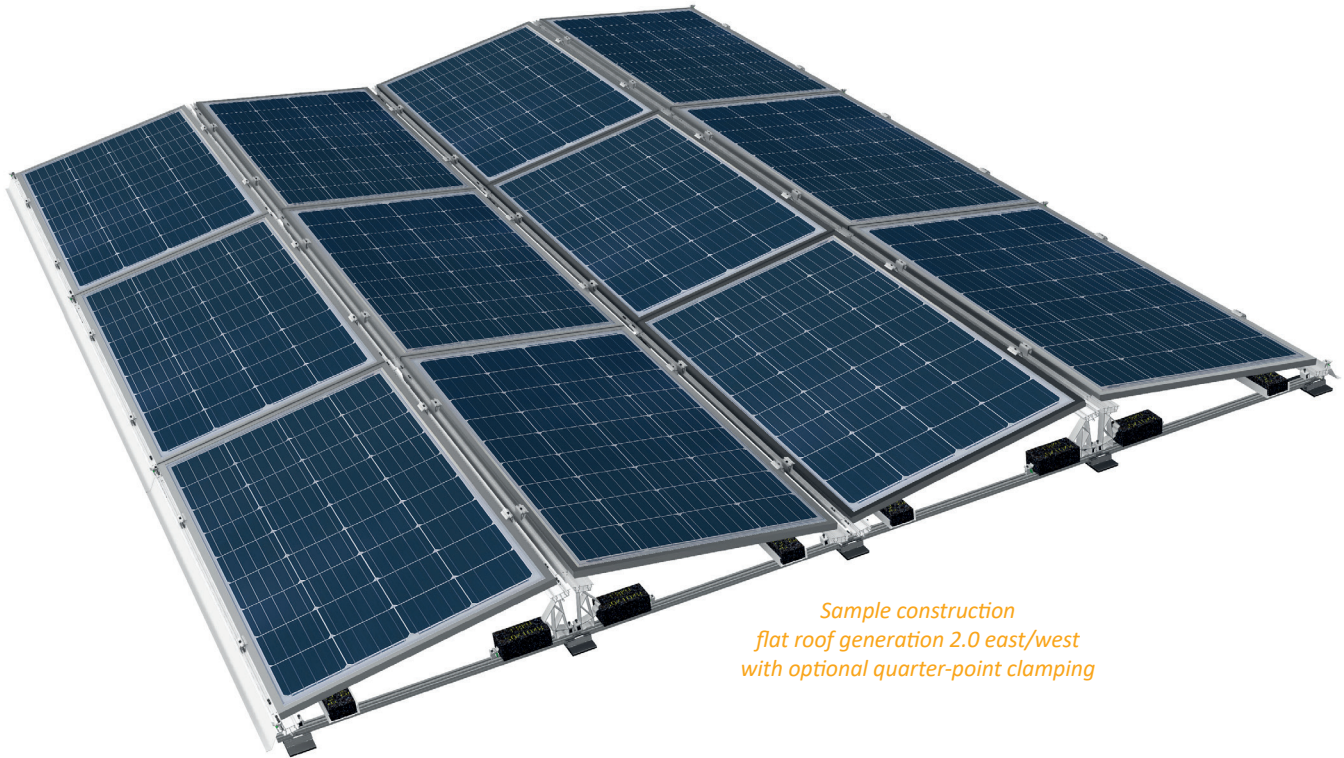
Ballast arrangement



FLA Holder Top with Wind Deflector Top



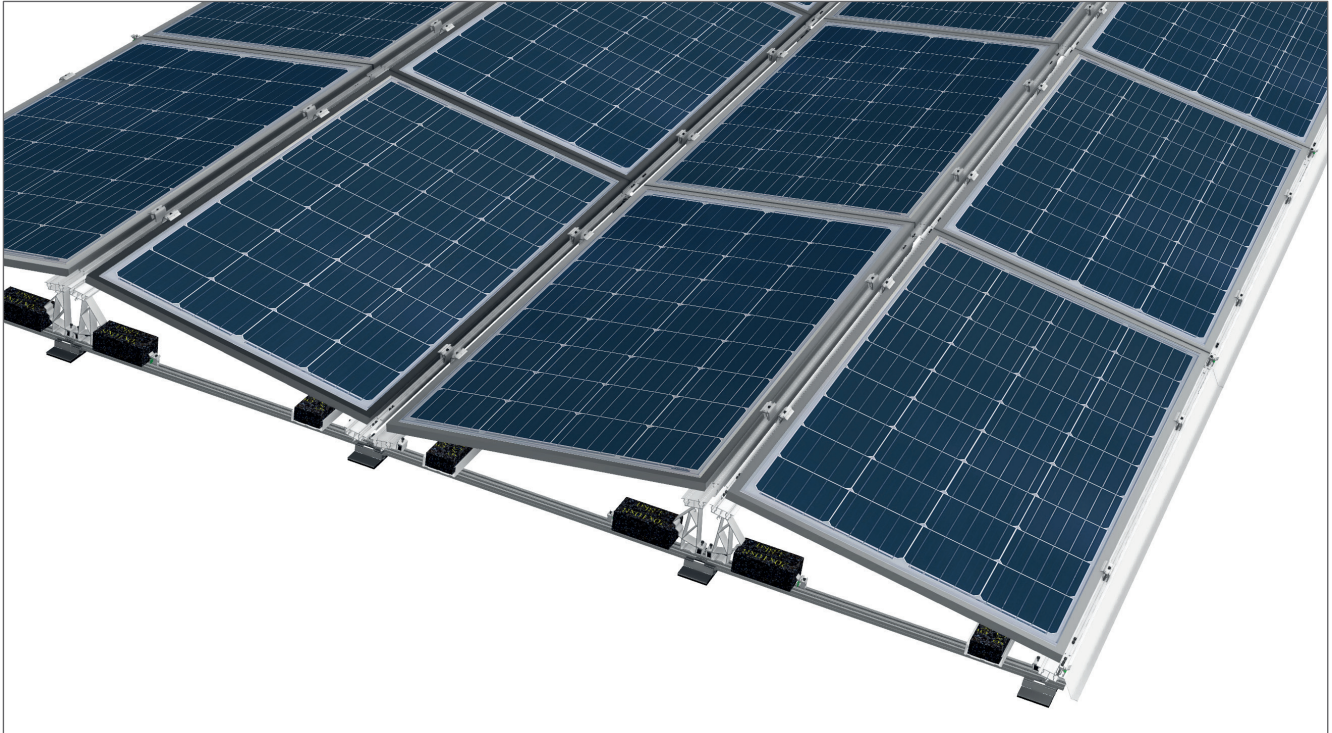
Module with FLA Holder Bottom



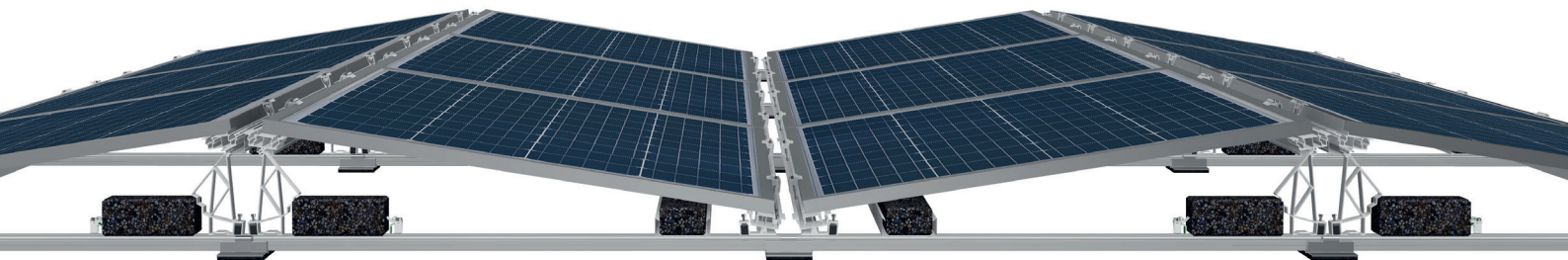
*Sample construction
flat roof generation 2.0 east/west
with optional quarter-point clamping*

Flat roof system generation 2.0 east/west: Great improvements through optimization and increased flexibility

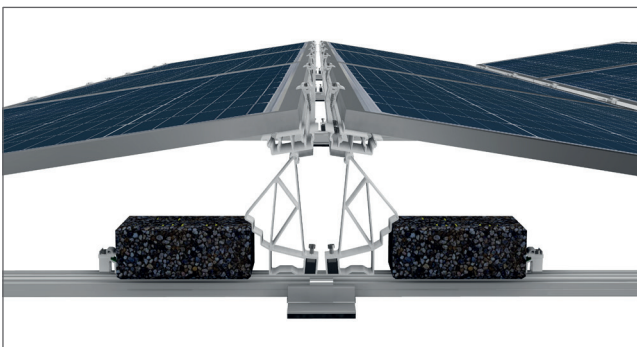
- » Integrated maintenance aisle for convenient access
- » Optional use of wind deflectors to optimize airflow in case of very high wind loads
- » One of the lowest ballasted systems on the market
- » Clamping possible on both sides of the panel **as well** as optional quarter-point clamping
- » Use Cable Clip RAIL for cable management
- » Can be integrated into a lightning protection system
- » Low number of standardized components – maximum flexibility for module size and clamping positions
- » Simple fixation of ballast stones through indentation for 50 mm / 60 mm and 70 mm
- » Even possible with RAIL 30 / RAIL 35 / RAIL 40 or RAIL 60
- » Flexibility in arrangement and number of base plates allows for maximum adaptability to the requirements of the roof membrane
- » Only one tool required: Torx 40
- » Use Solar.Pro.Tool for an easy system design and project report incl. statics
- » Due to the swivel joint, minor installation errors can be compensated
- » Unevenness of the roof can be absorbed
- » Standard components



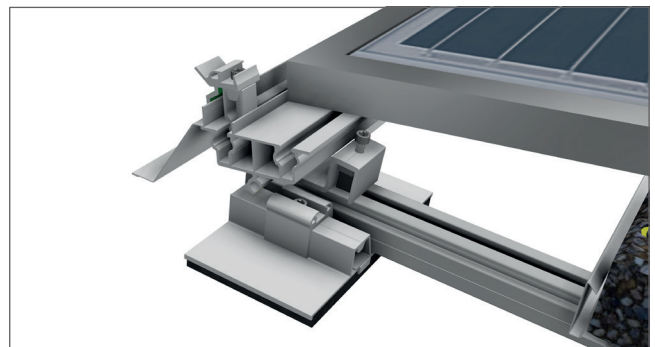
Structure alignment: east/west



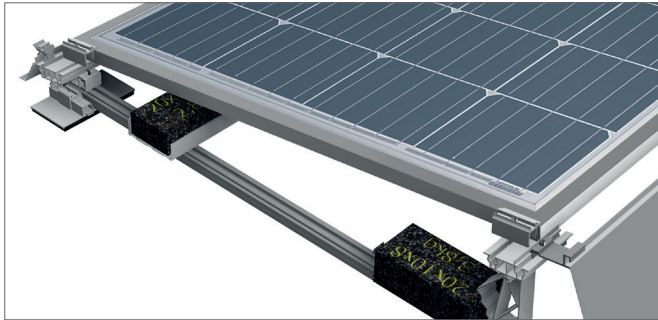
Ballast arrangement



FLA Holder Top with module

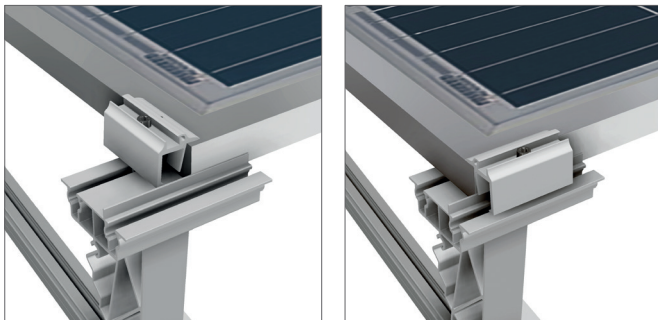
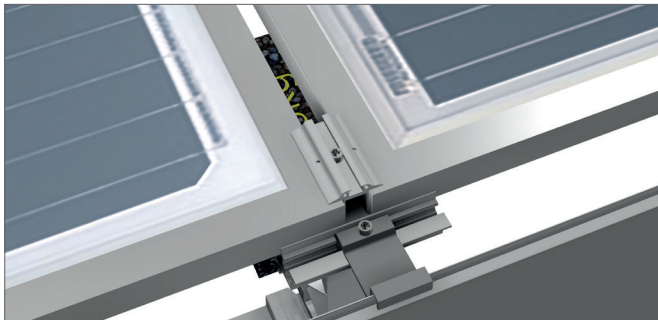


FLA Holder Bottom with Wind Deflector Bottom



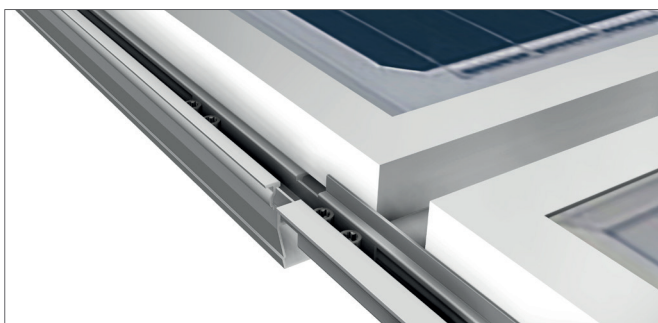
Combined clamping with mid and end clamps

Our mid and end clamps attach the panels directly to the FLA Holders Top and the FLA Holders Bottom. Once the FLA Holders are clicked into the rail, the module is placed on top and fixed with the clamps. Corner point clamping is possible either at the long side or the short side of the panel.



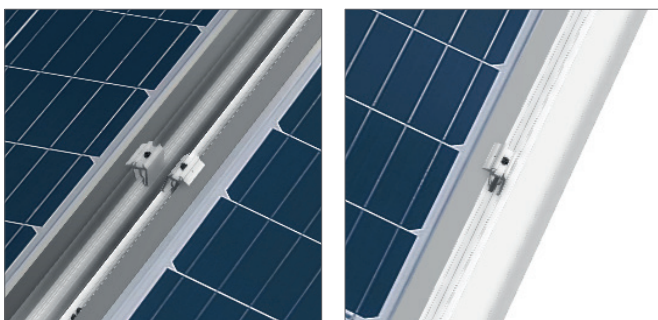
Clamping in either one of the rail channels

Our FLA Holders are equipped with 2 rail channels. This allows our end clamps to be attached either at the short or at the long side of the panel.



Optional Quarter-Point Clamping

By combining FLA Flex with the FLA Flex Connector, alternative quarter-point clamping is enabled. This allows for a quick and easy installation, while adhering to the panel manufacturer's installation instructions.



FLA Holder Top

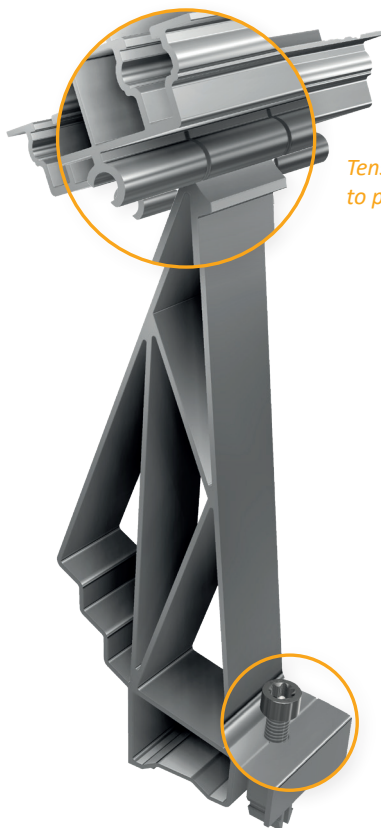
- » Convenient fixation from the top
- » Only one tool required: Torx 40
- » Short side or long side clamping
- » Tension-free module installation due to the FLA Holder's pivot joint 10°/15°
- » Same component for both, south and east/west systems
- » Simple fixation of ballast stones through indentation for 50 mm / 60 mm and 80 mm
- » FLA Holder is equipped with 2 rail channels
- » Fast installation, proven connection system
- » Minor installation errors are easily compensated for
- » Can be attached to any RAILS



FLA Holder Top 10°



FLA Holder Top 15°



Tension-free module installation due to pivot joint

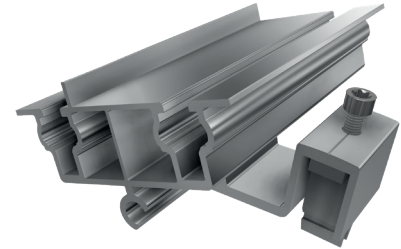
Convenient fixation from the top with only one tool (Torx 40)

VARIANTS

Item no. 21113-10	EAN 4262355111763	FLA Holder Top 10°	10 pcs. per PU
Item no. 21113-15	EAN 4262355111770	FLA Holder Top 15°	10 pcs. per PU

FLA Holder Bottom

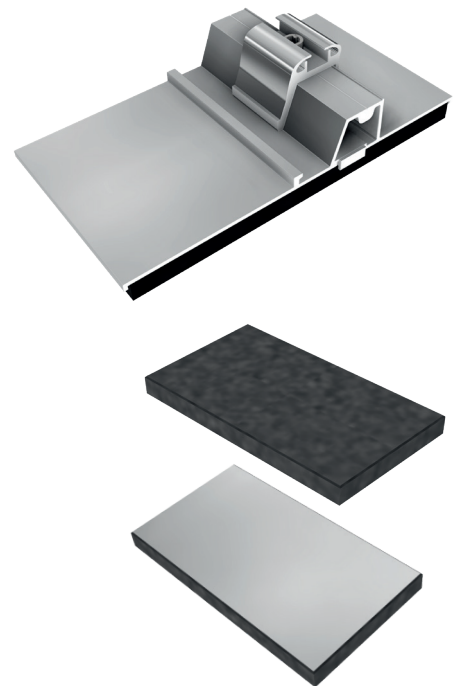
- » Convenient fixation from the top
- » Only one tool required: Torx 40
- » Short side or long side clamping
- » Tension-free module installation due to the FLA Holder's pivot joint
- » Same component for both, south and east/west systems
- » Fast installation, proven connection system
- » Can be used in combination with FLA Holder Top



Item no. 21110-00	EAN 4262355111787	FLA Holder Bottom	25 pcs. per PU
--------------------------	-------------------	-------------------	----------------

FLA Base Plate with Building Protection Mat

- » Convenient fixation from the top
- » Only one tool required: Torx 40
- » Flexible attachment, which fits all RAILS
- » Wide bearing surface for low point loads
- » The aluminum coating on the bottom of the building protection mat AKSK prevents the possible release of plasticizer to the roof membrane, suitable for foil roofs
- » The roof protection mats are made of EPDM; The force is transferred to the roof deck

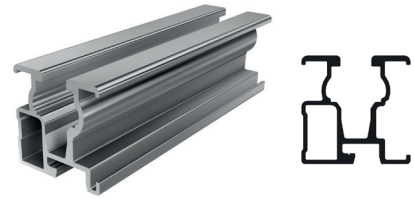


VARIANTS

Item no. 21112-10	EAN 4262355111794	FLA Base Plate with Building Protection Mat SK	25 pcs. per PU
Item no. 21112-20	EAN 4262355111800	FLA Base Plate with Building Protection Mat AKSK	25 pcs. per PU

RAIL 30

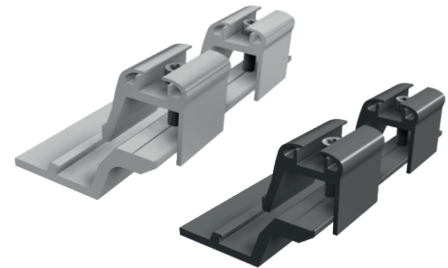
- » Compatible with popular racking on the market
- » Easy handling and stacking
- » Same weight/static values as comparable products



Item no. 81130-5400	EAN 4262355111657	RAIL 30- 5400 mm	200 pcs. per PU
----------------------------	-------------------	------------------	-----------------

External Connector for all RAILS (excl. RAIL 120)

- » Easy and fast connection of module mounting profiles
- » Convenient installation from the top
- » Only one tool required: Torx 40
- » Compatible with other profiles on the market
- » Universally applicable for all RAILS (excl. RAIL 120) with the same static values as a continuous rail
- » Also available in black anodized

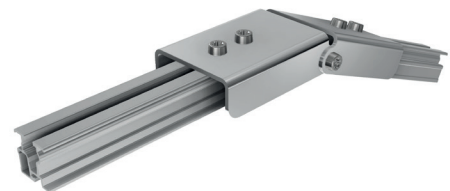


VARIANTS

Item no. 81100-00	EAN 4262355112326	External Connector RAIL 2.0	25 pcs. per PU
Item no. 86100-00	EAN 4262355112333	External Connector RAIL 2.0, black anodized	25 pcs. per PU

FLA Ridge Connector RAIL

- » Secures flat roof structures over the ridge
- » Articulated joint adapts to any roof pitch
- » Fits RAIL 30, 35 and 40

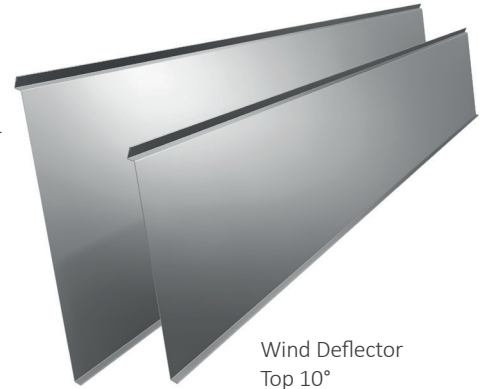


Item no. 23400-00	EAN 4262355111824	FLA Ridge Connector RAIL	20 pcs. per PU
--------------------------	-------------------	--------------------------	----------------

Wind Deflector Top 2.0

- » Optimizes the aerodynamics of the system by directing the wind over the solar modules
- » The use of wind deflectors reduces the required ballast
- » Prevents solar modules from lifting off
- » Length 2280 mm
- » Height 389 mm (Wind Deflector Top 15°)
- » Height 289 mm (Wind Deflector Top 10°)

Wind Deflector Top 15°



Wind Deflector Top 10°

VARIANTS

Item no. 21212-2280	EAN 4262355111732	Wind Deflector Top 2.0 - 10°	20 pcs. per PU
Item no. 21217-2280	EAN 4262355111749	Wind Deflector Top 2.0 - 15°	20 pcs. per PU

Wind Deflector Bottom 2.0

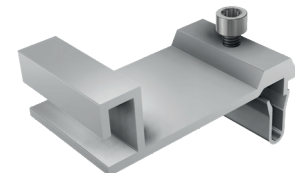
- » Optimizes the aerodynamics of the system by directing the wind over the solar modules
- » For south-aligned systems place wind deflectors on each row of modules, even in interior zones
- » Suitable for all RAILS



Item no. 21211-2280	EAN 4262355111756	Wind Deflector Bottom 2.0	20 pcs. per PU
----------------------------	-------------------	---------------------------	----------------

Wind Deflector Connector South

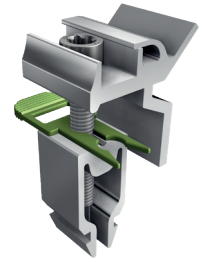
- » Fixates the upper part of the Wind Deflector Top to the FLA Holder Top (applies only to south-aligned systems)
- » Convenient installation from the top
- » Only one tool required: Torx 40



Item no. 21115-00	EAN 4262355112043	Wind Deflector Connector South	100 pcs. per PU
--------------------------	-------------------	--------------------------------	-----------------

FLA Universal Clamp

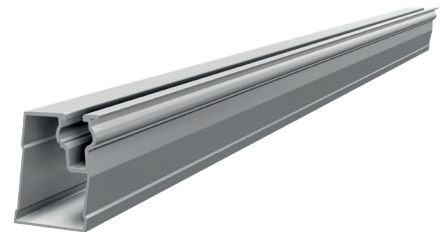
- » Convenient fixation from the top
- » Only one tool required: Torx 40
- » One clamp for the fixation of ballast blocks as well as wind deflectors



Item no. 21114-00	EAN 4262355111480	FLA Universal Clamp	200 pcs. per PU
--------------------------	-------------------	---------------------	-----------------

FLA Flex

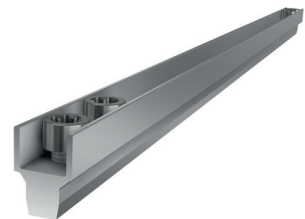
- » Allows for quarter-point clamping according to manufacturer's specifications
- » Suitable for larger modules
- » For the attachment of any-size modules in high-snowload areas



Item no. 21117-2100	EAN 4262355112173	FLA Flex	20 pcs. per PU
----------------------------	-------------------	----------	----------------

FLA Flex Connector

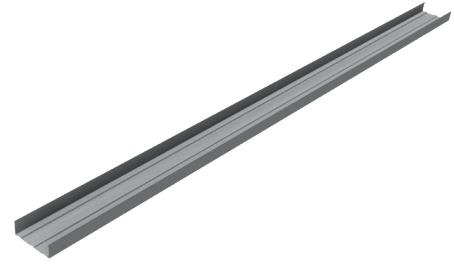
- » Variable connection of FLA Holder with FLA Flex rail
- » Only one tool required: Torx 40
- » For the attachment of any-size modules in high-snowload areas



Item no. 21118-370	EAN 4262355112180	FLA Flex Connector	20 pcs. per PU
---------------------------	-------------------	--------------------	----------------

Ballast Tub 2.0

- » To be placed on top of the RAILS and filled with stones according to the ballast plan
- » Adjustable in length to accommodate various module sizes up to 2200mm

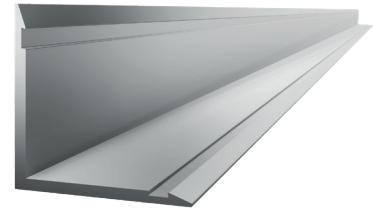


Item no. 22111-00	EAN 4262355111725	Ballast Tub 2.0	20 pcs. per PU
--------------------------	-------------------	-----------------	----------------

FLA Ballast Bracket

Angle profile for ballasting of the flat roof systems

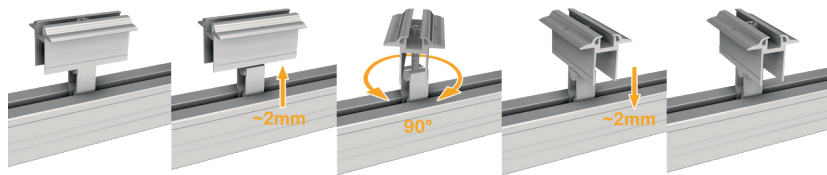
- » Suitable for any size ballast blocks
- » Reduced warehousing
- » Quick and easy to install
- » No tools required
- » Length 2300 mm; suitable for module length of up to 2200mm
- » Made of high-quality aluminium for high resistance to corrosion, weather conditions and external influences



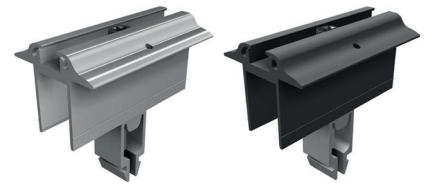
Item no. 21116-2300	EAN 4262355112302	FLA Ballast Bracket	150 pcs. per PU
----------------------------	-------------------	---------------------	-----------------

Mid Clamps and End Clamps Vario

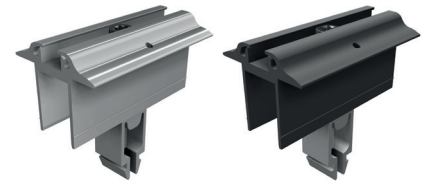
- » Universal mid and end clamp for frame heights 28 mm - 50 mm
- » Vertical or horizontal mounting by simply lifting and turning the claw 90°
- » Completely pre-assembled; compatible with all RAILS; Optimized warehousing
- » Convenient top-down installation; Only one tool required: Torx 40
- » 70 mm clamp length ensures a safe installation
- » Mid clamp available with or without grounding pin for potential equalization
- » Also available in black anodized
- » **Compatible with shim for clamps (Item no. 91701-00):**
- In combination suitable for 28 mm module frame heights



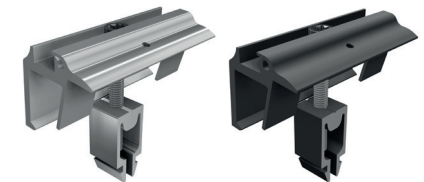
Easy switch between horizontal and vertical: just lift and turn the claw 90°



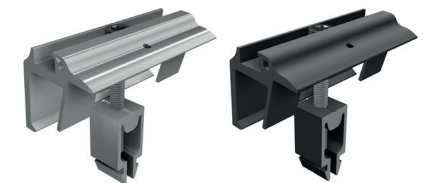
Mid clamp Vario with grounding pin for frame heights 28 mm - 50 mm



Mid clamp Vario without grounding pin for frame heights 28 mm - 50 mm



End clamp Vario with grounding pin for frame heights 28 mm - 50 mm



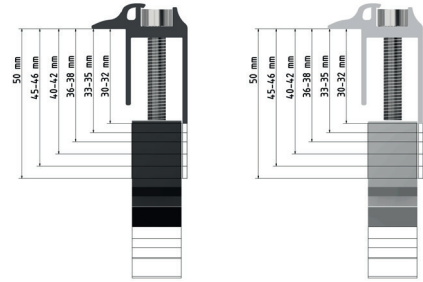
End clamp Vario without grounding pin for frame heights 28 mm - 50 mm

VARIANTS

Item no. 91112-00	EAN 4262355110544	End clamp Vario	100 pcs. per PU
Item no. 96112-00	EAN 4262355110551	End clamp Vario, black anodized	100 pcs. per PU
Item no. 91114-00	EAN 4262355112005	End clamp Vario with grounding	100 pcs. per PU
Item no. 96114-00	EAN 4262355112012	End clamp Vario with grounding, black anodized	100 pcs. per PU
Item no. 91121-01	EAN 4262355110568	Mid clamp Vario with grounding	100 pcs. per PU
Item no. 96141-01	EAN 4262355110575	Mid clamp Vario with grounding, black anodized	100 pcs. per PU
Item no. 91151-01	EAN 4262355110582	Mid clamp Vario	100 pcs. per PU
Item no. 96151-01	EAN 4262355110599	Mid clamp Vario, black anodized	100 pcs. per PU

End Clamp 30-50

- » End clamp for frame heights 30 mm - 50 mm
- » Convenient top-down installation; Only one tool required: Torx 40
- » 70 mm clamp length ensures a safe installation

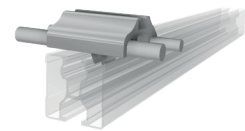


VARIANTEN

Item no. 91113-31	EAN 4262355111510	End clamp 30-32 mm	100 pcs. per PU
Item no. 96113-31	EAN 4262355111527	End clamp 30-32 mm, black anodized	100 pcs. per PU
Item no. 91113-34	EAN 4262355111534	End clamp 33-35 mm	100 pcs. per PU
Item no. 96113-34	EAN 4262355111541	End clamp 33-35 mm, black anodized	100 pcs. per PU
Item no. 91113-37	EAN 4262355111558	End clamp 36-38 mm	100 pcs. per PU
Item no. 96113-37	EAN 4262355111565	End clamp 36-38 mm, black anodized	100 pcs. per PU
Item no. 91113-41	EAN 4262355111572	End clamp 40-42 mm	100 pcs. per PU
Item no. 96113-41	EAN 4262355111589	End clamp 40-42 mm, black anodized	100 pcs. per PU
Item no. 91113-45	EAN 4262355111596	End clamp 45-46 mm	100 pcs. per PU
Item no. 96113-45	EAN 4262355111602	End clamp 45-46 mm, black anodized	100 pcs. per PU
Item no. 91113-50	EAN 4262355111619	End clamp 50 mm	100 pcs. per PU
Item no. 96113-50	EAN 4262355111626	End clamp 50 mm, black anodized	100 pcs. per PU

Lightning Protection Clamp Top

- » Fits all RAIL profiles
- » Convenient installation from the top
- » Only one tool required: Torx 40
- » Completely pre-assembled
- » One clamp, two options: round wire \varnothing 8 mm and \varnothing 10 mm
- » Certified to DIN EN 62561
- » Metrological tests need to be performed according to the valid electrotechnical standards



Lightning Protection Clamp Top, very low height, suitable for 30 mm module frames

Item no. 91518-00	EAN 4262355110742	Lightning Protection Clamp Top	100 pcs. per PU
-------------------	-------------------	--------------------------------	-----------------

Cable Clip RAIL

Cable tie made of UV and weather-resistant plastic in matt black.

Improved design:

- » Even more compact and space-saving for clean and stable cable routing on the roof
- » Optimized closure for accurate fixation
- » Even more pliable and flexible
- » Time savings due to easier and quicker cable attachment
- » Frequent re-usability leads to material and cost savings
- » Fits into the upper rail channel of any SL Rack RAIL and common rails on the market with an 8 mm groove width
- » Quickly installed and easily de-installed for later re-use
- » Effortless repositioning in the top rail channel
- » Suitable for installation underneath modules with a frame height of 30 mm - also works for glass-glass and bifacial modules
- » Space for one connector (e.g. MC4, Sunclix) and up to 15 cables with a diameter of 5.4 mm each.



Item no. 91402-00	EAN 4262355110827	Cable Clip RAIL, matt black	100 pcs. per PU
-------------------	-------------------	-----------------------------	-----------------

FLA Coefficient of Friction Measuring Kit

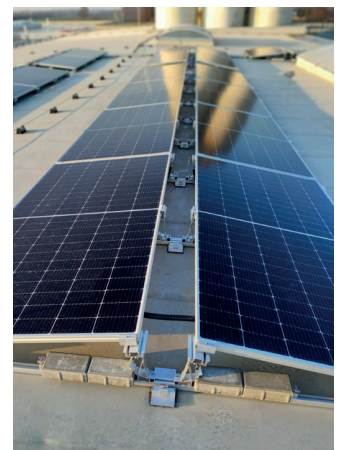
Complete tool set for determining the coefficient of friction.

Contains the following items:

- » Precision spring scale Medio Line (art. no. 41000) for weight determination and tensile force measurement from Pesola, the Swiss world market leader; Forces up to 1000 g can be measured; Robust, anodized aluminium tube with long precision scale; Tare and zero setting device as well as rotating and swiveling suspension bracket
- » Square aluminum block „Königsberger friction block“ weighing 1 kg
- » Anti-slip base made of rubber granulate, 115 mm x 40 mm x 8 mm
- » Rubber granulate base, 115 mm x 40 mm x 8 mm, aluminum-laminated bottom



Item no. 09500-50	EAN 4262355112364	FLA Coefficient of Friction Measuring Kit	1 pcs. per PU
-------------------	-------------------	---	---------------





SL Rack
[Website](#)



SL Rack
[YouTube](#)



SL Rack
[Online ordering system](#)



Contact us
for an offer:

SL Rack GmbH
Münchener Straße 1
83527 Haag i. OB
E-Mail: sales@sl-rack.com
Phone: [+49 8072 3767-0](tel:+49807237670)
www.sl-rack.com